

**ASQUITH GIRLS HIGH SCHOOL**  
**TRIAL HSC**  
**ENGLISH STANDARD**  
**2001**

**Paper 2 – Modules**

<p><b>General Instructions</b></p> <ul style="list-style-type: none"><li>• Reading time – 5 minutes</li><li>• Working time – 2 hours</li><li>• Write using blue or black pen</li><li>• Total marks = 60</li></ul>	<p><b>SECTION I</b></p> <p>Total Marks (20)</p> <ul style="list-style-type: none"><li>• Attempt ONE question from Questions 1-3.</li><li>• Allow about 40 minutes for this section.</li></ul> <p><b>SECTION II</b></p> <p>Total Marks (20)</p> <ul style="list-style-type: none"><li>• Attempt ONE question from Questions 4-7.</li><li>• Allow about 40 minutes for this section.</li></ul> <p><b>SECTION III</b></p> <p>Total Marks (20)</p> <ul style="list-style-type: none"><li>• Attempt ONE question from Questions 8-10.</li><li>• Attempt about 40 minutes for this section.</li></ul>
---	---

## SECTION I

### Module A: EXPERIENCE THROUGH LANGUAGE (20 marks)

Attempt ONE Question from Questions 1- 3

Allow about 40 minutes for this section

Answer the question on your examination pad. Write your name on the back of each sheet of paper on which you write.

In your answer you will be assessed on how well you:

- demonstrate understanding of the ways meaning is shaped through narrative, dialogue or image.
- organise, develop and express ideas using language appropriate to audience, purpose and form.
- re-create text into new text by changing perspective and context for specified audience.

### Question 1 - Telling Stories

"Setting plays an important role in any narrative."

How important is a sense of place in your prescribed text and other texts of your own choosing?

The prescribed texts are:

- Prose fiction – Henry Lawson, *The Penguin Henry Lawson Short Stories* ('The Drover's Wife', 'In a Dry Season', 'The Loaded Dog' and 'Joe Wilson's Courtship')
- Amanda Tattam, *Tales from the Blackboard* ('Choose your own adventure: Don't We All?', 'Rubicon', 'Slippery', 'The School Mascot', 'To Ms with Love?', 'Kultitja', 'Red Corner, White Corner', 'Walls and Bridges', 'Write for Life', 'The Lesson', 'Feral Line Five')
- Media – William Fitzwater, *Through Australian Eyes* ('China' and 'Hungary')
- Nonfiction - Boori (Monty) Pryor, with Meme McDonald, *Maybe Tomorrow*

OR

### Question 2 - Dialogue

What use is made of voice or voices in your prescribed text and other texts of your own choosing?

In your response you should consider the following elements:

- who this voice represents
- the language that is used
- the effect on the responder.

The prescribed texts are:

- Drama  
Jane Harrison, *Stolen*  
David Williamson, *The Club*
- Poetry  
Komninos, *Komninos by the Kupful*  
(*'hillston welcome', 'eat', 'drunken dialect', 'diary of a residency', 'thomastown talk'*)

OR

**Question 3 - Image**

Imagine that you are the composer of your prescribed text. You have been invited to speak to a group of HSC students about the importance of image. Select an image or group of images that you feel add significant meaning to your text. Discuss this significance and why you chose to feature it.

The prescribed texts are:

- Poetry                    Kevin Gilbert (Ed.), *Inside Black Australia* Oodgeroo Noonuccal 'The Past'; Errol West, 'There is no one to teach me the songs that bring the moon'; Kevin Gilbert, 'Tree Kiacatoo'; Eva Johnson, 'Weevilly Porridge'; Jenny Hargraves Nampijinpa, 'Yuntalpa', 'Ku (Child leave the tape recorder)'.
- Film                      Baz Luhrman, *Strictly Ballroom*  
Peter Weir, *The Truman Show*
- Multimedia             Raymond Briggs, *When the Wind Blows*

SECTION II

Module B: CLOSE STUDY OF TEXTS (20 marks)

Attempt ONE question from Questions 4 - 7

Allow about 40 minutes for this section

Answer the question on your examination pad. Write your name on the back of each sheet of paper on which you write.

---

In this section you will be assessed on how well you:

- demonstrate understanding of a text's distinctive qualities and how these shape meaning.
  - organise, develop and express ideas using language appropriate to audience, purpose and form.
- 

**Question 4 - Drama**

Katherine Thomson, *Navigating*

What do you think is the dramatic function of Bear in this play?

OR

John Misto, *The Shoehorn Sonata*

Examine the roles played by the two women in *Shoehorn Sonata*. To what extent do they achieve peace by the play's conclusion?

OR

William Shakespeare, *Macbeth*

Choose THREE key scenes from the play and discuss their dramatic impact on the play as a whole.

OR

**Question 5 - Prose Fiction**

Robert Cormier, *We All Fall Down*

How does the novel, *We All Fall Down* demonstrate many of the weaknesses in modern Western societies?

OR

Jane Yolen, *Briar Rose*

"Happy ever after is a fairy tale notion, not history."

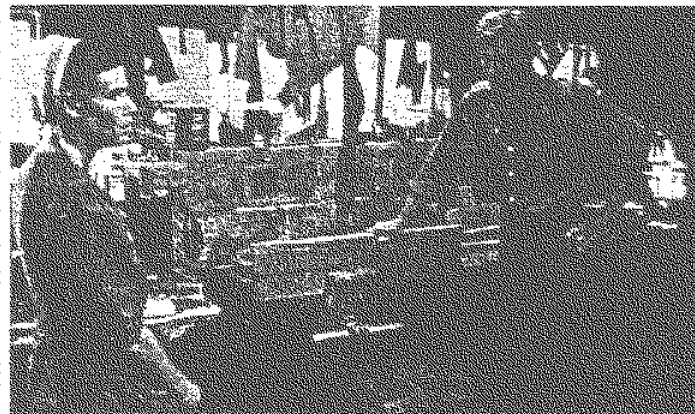
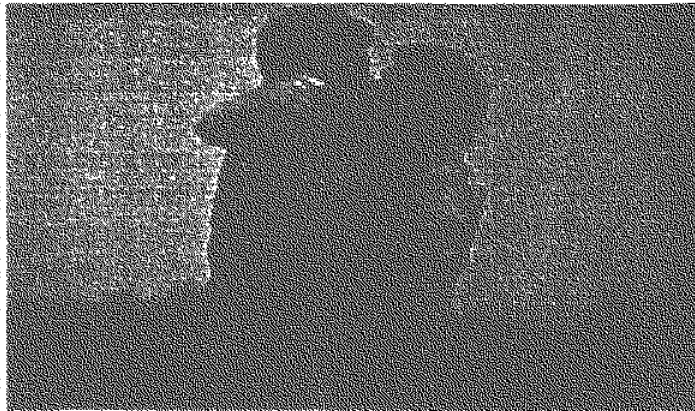
Examine the role that fairy tales and myth making play in the composition of this text.

**\* Question 6 - Nonfiction, Film, Media or Multimedia**

Film — Peter Weir, *Witness*

Explore the significance of these three images from the film both in terms of narrative development and cinematic techniques.

Images are from *Witness*, directed by Peter Weir, 1985. Paramount Studios



OR

**Non-fiction** — Gordon Matthews, *An Australian Son*

What does the reader learn from this text about self-discovery? In your response evaluate what use Matthews makes of the techniques of autobiography.

OR

**Multimedia** – *Australian War Memorial Website*

The section of this site set for study is: Information is available in the July issue of the BOS Bulletin
--

How does the Australian War Memorial Site offer the viewer both information and understanding of Australians at war in France in 1918?

OR

**Question 7 —Poetry**

Debbie Westbury, *Mouth to Mouth*

The prescribed poems are: 'The Scribe's Daughter', 'The Prince', 'shells', 'TV News', 'Somewhere else', 'Mouth to Mouth', 'Dapto Dressing Up'.

Comment on the use of structure and form in 'Mouth to Mouth' and one other of Westbury's prescribed poems.

OR

Wilfred Owen, *War Poems and Others*

The prescribed poems are: 'The Send-Off', 'Anthem for Doomed Youth', 'Dulce et Decorum Est', 'Miners', 'Spring Offensive' and 'Futility.'

Examine what use Owen makes of form in 'Anthem for Doomed Youth' and one other of his prescribed poems.

**SECTION III**

**Module C: Text and Society (20 marks)**

**Attempt ONE question from Questions 8 - 10**

**Allow about 40 minutes for this section**

Answer the question on your examination pad. Write your name on the back of each sheet of paper on which you write.

---

In this section you will be assessed on how well you:

- demonstrate analysis of the ways texts shape meaning
- organise, develop and express ideas using language appropriate to audience, purpose and form

---

**Question 8 The Institution and Personal Experience**

Write a magazine article exploring individual and social responsibility. Base this article on your prescribed text and other related texts of your own choosing.

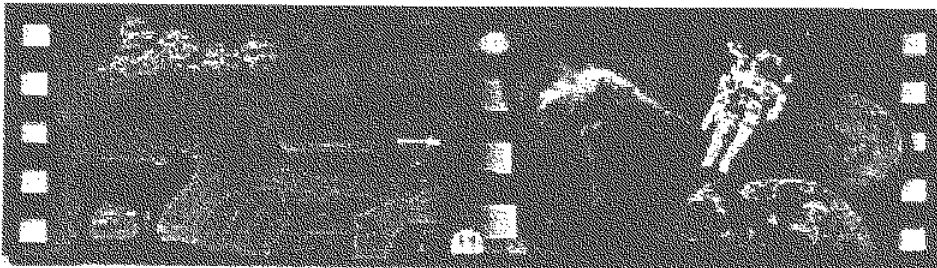
The prescribed texts are:

- |                 |                                      |
|-----------------|--------------------------------------|
| • Prose fiction | Scott Monk, <i>Raw</i>               |
| • Drama         | Tony Strachan, <i>State of Shock</i> |
| • Film          | Bill Couturie, <i>Dear America</i>   |

**OR**

**Question 9. Exploration and Travel**

Use the image included for you below as a starting point to compose a text dealing with exploration and travel. In this text you must make references to your prescribed text and other related texts of your own choosing.



What insights have you discovered whilst exploring a variety of texts dealing with exploration and travel?  
Base your response on your prescribed text and other related texts of your own choosing.

\*NOTE: *Getaway* is a television program where various presenters go to and present travel destinations for viewers, giving information about how to get there, prices, activities and value for money.

The prescribed texts are:

- |                 |   |
|-----------------|---|
| • Prose Fiction | Douglas Adams, <i>A Hitchhiker's Guide to the Galaxy</i>  |
| • Media         | Les Hiddins, <i>The Bush Tucker Man: Stories of Survival</i> ('Gold Fever', 'The Passionate Prussian', 'The Great Misadventure', 'Into the Vilest Country') |
| • Nonfiction    | Robyn Davidson, <i>Tracks</i>   |

**OR**

✦ **Question 10. Consumerism**

Compose a magazine article on consumerism that deals with aspects of consumerism in society. The title for your article is: "Consumerism is a Modern Disease". In your article refer to your prescribed text and your wide reading.

The prescribed texts are:

- |              |   |
|--------------|---|
| • Poetry     | Bruce Dawe, <i>Sometimes Gladness</i> ('Enter Without So Much as Knocking', 'Americanized', 'Abandonment of Autos,' 'Breakthrough', 'The Not-so-good Earth' and 'Televistas') |
| • Multimedia | Real Wild Child Consortium, <i>Real Wild Child</i>  |