



--	--	--	--	--

Centre Number

--	--	--	--	--	--	--	--	--

Student Number

SCEGGS Darlinghurst

2007

HIGHER SCHOOL CERTIFICATE
TRIAL EXAMINATION

Mathematics Extension 1

This is a TRIAL PAPER only and does not necessarily reflect the content or format of the Higher School Certificate Examination for this subject.

General Instructions

- Reading time – 5 minutes
- Working time – 2 hours
- Write using black or blue pen
- Board-approved calculators may be used
- A table of standard integrals is provided at the back of this paper
- All necessary working should be shown in every question

Total marks – 84

- Attempt Questions 1–7
- All questions are of equal value

BLANK PAGE

Total marks – 84
Attempt Questions 1–7
All questions are of equal value

Answer each question in a SEPARATE writing booklet. Extra writing booklets are available.

- | | Marks |
|--|--------------|
| Question 1 (12 marks) Use a SEPARATE writing booklet. | |
| (a) Evaluate $\lim_{x \rightarrow 0} \frac{\sin 2x}{5x}$ | 2 |
| (b) Solve for x :
$\frac{-2}{x-3} \leq 1$ | 2 |
| (c) Sketch the graph of $y = -3 \sin^{-1} \frac{x}{2}$ clearly labeling all important features. | 2 |
| (d) Evaluate $\int_0^{\frac{1}{6}} \frac{3dx}{\sqrt{1-9x^2}}$ | 3 |
| (e) Find the obtuse angle, to the nearest minute, between the lines:
$4x - y + 6 = 0 \quad \text{and} \quad x + 3y - 7 = 0$ | 3 |

Question 2 (12 marks) Use a SEPARATE writing booklet.

- (a) If the equation $5x^3 - 6x^2 - 29x + 6 = 0$ has roots α , β and γ , find the value of: 2

$$\frac{1}{\alpha} + \frac{1}{\beta} + \frac{1}{\gamma}$$

- (b) Consider the functions:

$$f(x) = x \ln x - x \quad x > 0$$

$$g(x) = 3 - x$$

- (i) Find the stationary point of $y = f(x)$ and determine its nature. 2
-
- (ii) Draw the graph of $y = f(x)$. 2
- (iii) On the same graph of $y = f(x)$, draw the graph of $y = g(x)$ and hence explain why the equation $x \ln x - 3 = 0$ has only one root. 2
- (iv) Use one application of Newton's Method, with $x_1 = 2.8$, to find a better approximation of the root of the equation $x \ln x - 3 = 0$. 2
- (c) Gemma and Evan are in a group of nine people. 2

How many groups of five may be selected so as to include one of Gemma or Evan but not both?

Question 3 (12 marks) Use a SEPARATE writing booklet.

(a) Find $\int \frac{dx}{\sqrt{x}\sqrt{1+\sqrt{x}}}$ using the substitution $u = 1 + \sqrt{x}$. 3

(b) $P(2ap, ap^2)$ is a point on the parabola $x^2 = 4ay$.

(i) Show that the equation of the normal to the parabola at the point P is 2

$$x + py = 2ap + ap^3$$

(ii) If the normal at P cuts the y -axis at Q show that the co-ordinates of Q are $(0, 2a + ap^2)$. 1

(iii) Show that the co-ordinates of R which divide the interval PQ externally in the ratio $2:1$ are $(-2ap, 4a + ap^2)$. 1

(iv) Find the Cartesian equation of the locus of R and describe it geometrically. 3

(v) Show that if the normal at P passes through a given point (h, k) then p must be a root of the equation: 1

$$ap^3 + (2a - k)p - h = 0$$

(vi) Hence state the maximum number of normals to the parabola $x^2 = 4ay$ which can pass through any given point. 1

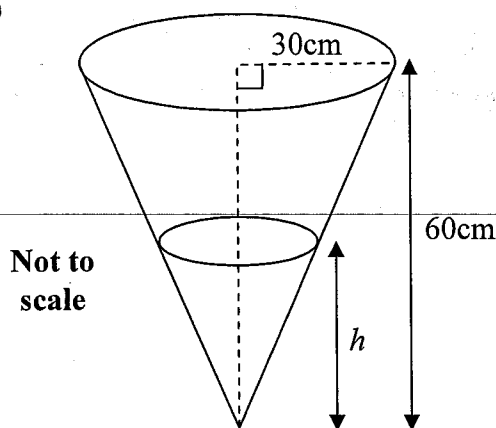
Question 4 (12 marks) Use a SEPARATE writing booklet.

- (a) (i) Express $\sqrt{3} \cos \theta - \sin \theta$ in the form $R \cos(\theta + \alpha)$ where α is in radians. 2

- (ii) Hence, or otherwise, find the general solution of the equation 2

$$\sqrt{3} \cos \theta - \sin \theta = 1$$

(b)



Water is being poured into a conical vessel at a constant rate of 36mLs^{-1} .

The radius of the vessel is 30cm and its height is 60cm.

After t seconds the depth of the water in the vessel is h cm.

- (i) Show the volume of water in the vessel for any given h is given by: 2

$$V = \frac{\pi h^3}{12}$$

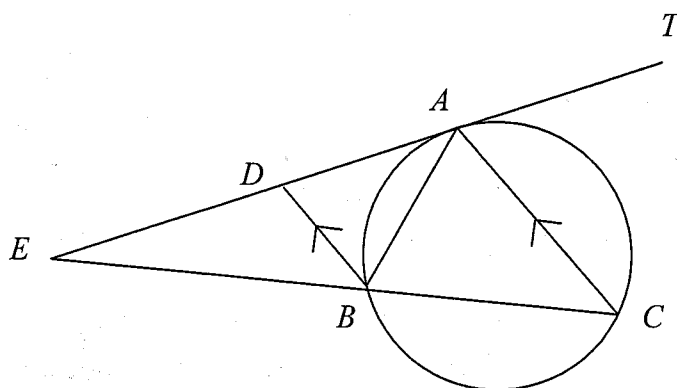
- (ii) What is the depth of water in the vessel after 4 seconds. (Give your answer to 3 significant figures.) 2

- (iii) Find the rate at which the depth of water is increasing after 4 seconds. (Give your answer to 3 significant figures.) 2

- (iv) Find the rate at which the surface area S , of the top of the water, is changing when the depth is 32cm. 2

Question 5 (12 marks) Use a SEPARATE writing booklet.

(a)



ABC is a triangle inscribed in a circle. The tangent at A to the circle meets the side CB produced at E . The parallel from B to CA meets the tangent TE at D .

(i) Prove that $\triangle ABE$ is similar to $\triangle EBD$. 3

(ii) Hence, or otherwise, show that $BE^2 = AE \times DE$. 2

(b) The acceleration of a particle moving in a straight line is given by $\frac{d^2x}{dt^2} = -\frac{72}{x^2}$, where x metres is the displacement from the origin after t seconds.

Initially the particle is 9 metres to the right of the origin with a velocity of 4 metres per second.

(i) Show that the velocity V of the particle in terms of x is $V = \frac{12}{\sqrt{x}}$. 4

Explain why V is always positive for the given initial conditions.

(ii) Find an expression for t in terms of x . 2

(iii) How many seconds does it take for the particle to reach a point 35m to the right of the origin? 1

Question 6 (12 marks) Use a SEPARATE writing booklet.

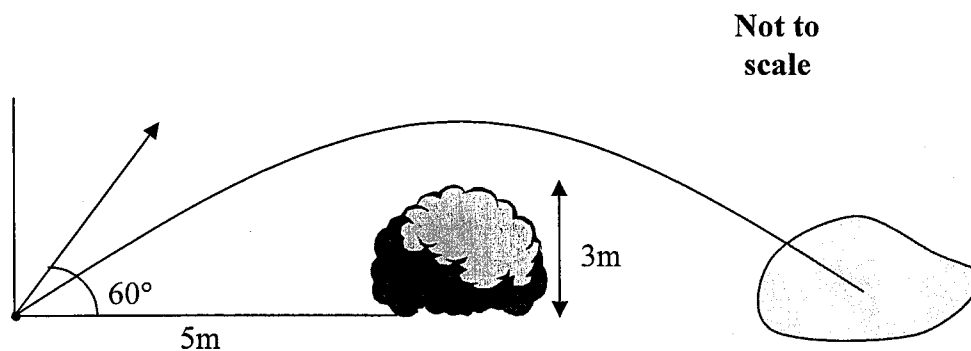
- (a) In a class there are 6 girls and 9 boys. Their classroom has 4 rows of 7 seats neatly arranged. Each student occupies a chair. Find the number of seating arrangements possible if:
- (i) students can sit anywhere. 1
 - (ii) all the girls want to occupy the first row. 1
 - (iii) 3 particular girls and 4 particular boys fill the back row seated alternatively. 1
- (b) A golf ball is hit an angle α , where $0^\circ < \alpha < 90^\circ$. The initial velocity of the ball is $V \text{ ms}^{-1}$. (Assume acceleration due to gravity $g = 9.8 \text{ ms}^{-2}$.)
- (i) Show that the horizontal and vertical displacement of the ball is given by: 2

$$x = V \cos \alpha t$$

$$y = -\frac{1}{2}gt^2 + V \sin \alpha t$$

- (ii) Show that $y = x \tan \alpha - \frac{gx^2}{2V^2} (1 + \tan^2 \alpha)$. 2

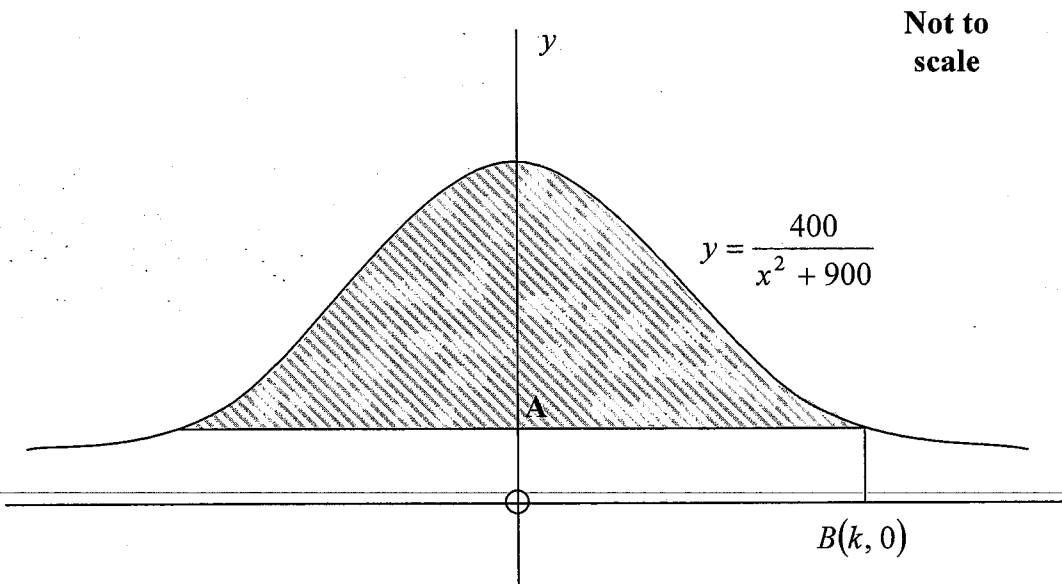
To play one shot, Samuel must clear a 3m shrub which is 5m from his ball. He hits his ball so that it has an initial velocity of 10 ms^{-1} and an angle of projection of 60° .



- (iii) By how far does his ball clear the shrub? 2
- (iv) What is the horizontal distance travelled by the ball? 3
(Assume the ball lands in a bunker of sand and stops immediately.)

Question 7 (12 marks) Use a SEPARATE writing booklet.

- (a) The cross-section of a roof for a new-age, environmentally friendly building is described by the equation $y = \frac{400}{x^2 + 900}$.



- (i) If A is the point $\left(0, \frac{1}{3}\right)$ find the value of k . 1
- (ii) Show that the shaded area is $\frac{20(2\pi - 3\sqrt{3})}{9} \text{ m}^2$. 2
- (iii) By considering the integral $\int_{-k}^k \frac{400}{x^2 + 900}$ or otherwise, show that the area of the cross-section will never exceed $\frac{40\pi}{3} \text{ m}^2$. 2
- (b) (i) Show that $\sin x + \cos x = \sqrt{2} \sin\left(x + \frac{\pi}{4}\right)$. 2
- (ii) Prove that $\frac{d}{dx}(e^x \sin x) = \sqrt{2} e^x \sin\left(x + \frac{\pi}{4}\right)$. 2
- (iii) Prove by mathematical induction that if $y = e^x \sin x$, then $\frac{d^n y}{dx^n} = (\sqrt{2})^n e^x \sin\left(x + \frac{n\pi}{4}\right)$ where n is a positive integer. 3

End of paper

2007 SCEGA Trial HSC Examination - Mathematics Ext. 1 - Solutions

Q1 a) $\lim_{x \rightarrow 0} \frac{\sin 2x}{5x}$

$= \frac{1}{5} \lim_{x \rightarrow 0} \frac{\sin 2x}{x}$

$= \frac{2}{5} \lim_{x \rightarrow 0} \frac{\sin 2x}{2x} \quad \checkmark$

Reas (2)

$= \frac{2}{5} \times 1 \quad \checkmark$ as $\lim_{x \rightarrow 0} \frac{\sin ax}{ax} = 1$

$= \frac{2}{5}$

b) $\frac{-2}{x-3} \leq 1$

$(x-3)^2 \frac{-2}{x-3} \leq 1(x-3)^2$

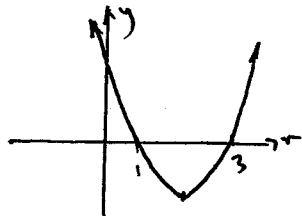
$-2(x-3) \leq x^2 - 6x + 9$

$-2x + 6 \leq x^2 - 6x + 9$

$0 \leq x^2 - 4x + 3 \quad \checkmark$

Sketch $y = x^2 - 4x + 3$

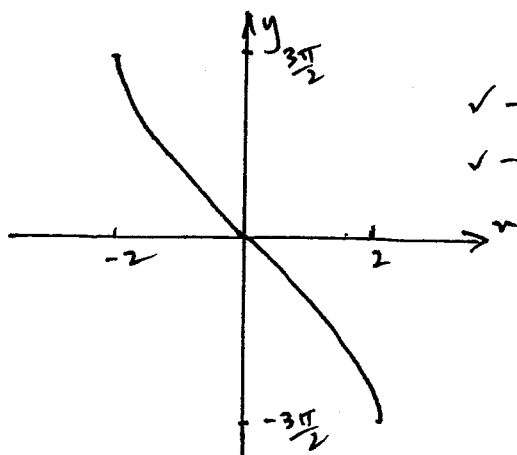
$= (x-3)(x-1)$



from graph $x \leq 1$ or $x \geq 3 \quad \checkmark$

c)

Comm (2)



\checkmark - for graph

\checkmark - for labels

calc (3)

$$\begin{aligned} d) \int_0^{\frac{1}{6}} \frac{3dx}{\sqrt{1-9x^2}} &= \frac{3}{3} \int_0^{\frac{1}{6}} \frac{dx}{\sqrt{\frac{1}{9}-x^2}} \quad \checkmark \\ &= \sin^{-1} 3x \Big|_0^{\frac{1}{6}} \quad \checkmark \\ &= \sin^{-1} \frac{1}{2} - \sin^{-1} 0 \\ &= \frac{\pi}{6} - 0 \\ &= \frac{\pi}{6} \quad \checkmark \end{aligned}$$

$$\begin{aligned} e) 4x - y + 6 &= 0 & x + 3y - 7 &= 0 \\ y &= 4x + 6 & 3y &= -x + 7 \\ \therefore m &= 4 & y &= -\frac{1}{3}x + \frac{7}{3} \\ & & \therefore m &= -\frac{1}{3} \quad \checkmark \end{aligned}$$

$$\begin{aligned} \therefore \tan \theta &= \left| \frac{4 - (-\frac{1}{3})}{1 + 4 \cdot (-\frac{1}{3})} \right| \quad \checkmark \\ &= \left| \frac{13/3}{1 - 4/3} \right| \\ &= |-13| \\ \theta &= 85^\circ 36' \\ \therefore \text{obtuse angle} &= 180^\circ - 85^\circ 36' \\ &= 94^\circ 24' \quad \checkmark \end{aligned}$$

Q2 a) $5x^2 - 6x^2 - 29x + 6 = 0$

$$\begin{aligned} \frac{1}{\alpha} &= \frac{1}{\beta} + \frac{1}{\gamma} \\ &= \frac{\beta\gamma + \alpha\gamma + \alpha\beta}{\alpha\beta\gamma} \quad \checkmark \\ &= \frac{c}{-d/a} \\ &= \frac{c}{-d} \\ &= \frac{-29}{-6} \\ &= 4\frac{5}{6} \quad \checkmark \end{aligned}$$

Be careful of the word obtuse!!

- done fairly well
- the most common mistake was stating that $\frac{c}{a} = \frac{29}{5}$
 \therefore getting $-\frac{29}{6}$ as final answer

b) i) $y = x \ln x - x$
 $\frac{dy}{dx} = x \cdot \frac{1}{x} + \ln x \cdot 1 - 1$
 $= 1 + \ln x - 1$
 $= \ln x$

\therefore st. points occur when $\frac{dy}{dx} = 0$

$\therefore \ln x = 0$

$x = 1$

$y = -1$

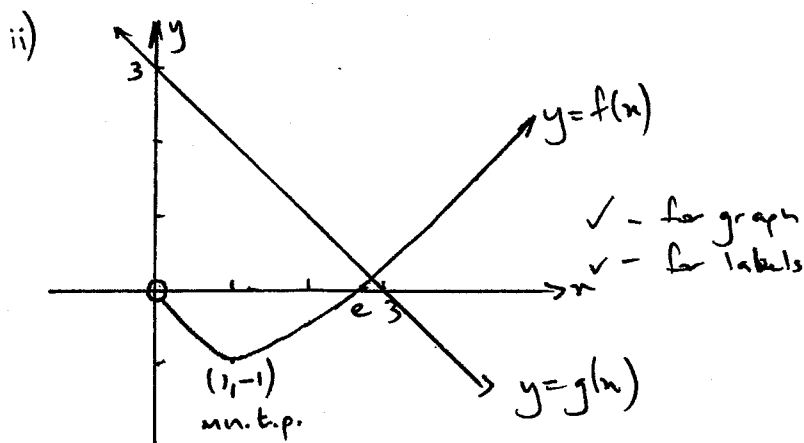
\therefore stationary point $(1, -1)$ ✓

$\frac{d^2y}{dx^2} = \frac{1}{x}$

Calc (2)

- most candidates found the stationary point well but used the first derivative test to test nature. This is fine but it is time consuming and the 2nd derivative is easy to find.

when $x=1$ $\frac{d^2y}{dx^2} = 1 > 0 \therefore (1, -1)$ is a minimum t.p. ✓



Comm (2)

- graph was done poorly students need to review sketching hard log graphs.

iii) The point of intersection represents the solution to $y = x \ln x - x$ and $y = 3 - x$ ✓

\therefore solving simultaneously

$x \ln x - x = 3 - x$

$x \ln x - 3 = 0$

Comm (2)

since there is only one point of intersection then $x \ln x - 3 = 0$ has only one root. ✓

- poorly explained students should draw the conclusion between solving simultaneously and one point of intersection.

$$\begin{aligned}
 \text{i)} \quad x_2 &= x_1 - \frac{f(x_1)}{f'(x_1)} & f(x) &= x \ln x - 3 \\
 & & f'(x) &= 1 + \ln x \quad \checkmark \\
 &= 2.8 - \frac{2.8 \ln(2.8) - 3}{1 + \ln 2.8} \\
 &= 2.86 \text{ (to 2 dec. pl.)} \quad \checkmark
 \end{aligned}$$

- many silly errors made here.

$$\begin{aligned}
 \text{eg } f(x) &= x \ln x - x \\
 \text{or} \\
 f'(x) &= \ln x.
 \end{aligned}$$

Reas (2)

$$\begin{aligned}
 \text{c)} \quad \text{No. of groups of 5} &= {}^7C_4 \times 2 \\
 &= 35 \times 2 \\
 &= 70 \quad \checkmark
 \end{aligned}$$

- done poorly
Students must review this work as there will be at least one question in the

Q3

$$\begin{aligned}
 \text{a)} \quad \int \frac{dx}{\sqrt{x} \sqrt{1+\sqrt{x}}} & \quad u = 1 + x^{1/2} \\
 & \quad du = \frac{1}{2} x^{-1/2} dx \\
 & \quad = \frac{1}{2\sqrt{x}} dx \quad \checkmark \\
 &= 2 \int \frac{dx}{2\sqrt{x} \sqrt{1+\sqrt{x}}} \\
 &= 2 \int \frac{du}{\sqrt{u}} \\
 \text{Calc (3)} \quad &= 2 \int u^{-1/2} du \quad \checkmark \\
 &= 2 \times \frac{u^{1/2}}{1/2} + C \\
 &= 4\sqrt{u} + C \\
 &= 4\sqrt{1+\sqrt{x}} + C \quad \checkmark
 \end{aligned}$$

HSC

$$\begin{aligned}
 \text{b)} \quad x^2 &= 4ay \\
 y &= \frac{x^2}{4a} \\
 \frac{dy}{dx} &= \frac{2x}{4a} \\
 &= \frac{x}{2a} \\
 \text{when } x &= 2ap \\
 \frac{dy}{dx} &= \frac{2ap}{2a} \\
 &= p \\
 \therefore M_{\text{tang}} &= p \quad \checkmark
 \end{aligned}$$

Remember to write in terms of x

$$\therefore m_{\text{norm}} = -\frac{1}{p}$$

$$\therefore \text{using } y - y_1 = m(x - x_1)$$

(2mm(2))

$$y - ap^2 = -\frac{1}{p}(x - 2ap) \quad \checkmark$$

$$py - ap^3 = -x + 2ap$$

$$x + py = 2ap + ap^3$$

ii) Q: $x = 0$ sub into $x + py = 2ap + ap^3$

$$\therefore 0 + py = 2ap + ap^3 \quad \checkmark$$

$$y = 2a + ap^2$$

$$\therefore Q(0, 2a + ap^2)$$

iii) $P(2ap, ap^2) \quad Q(0, 2a + ap^2)$

$$\begin{array}{c} \nearrow \\ \searrow \\ 2: -1 \end{array}$$

$$R \left(\frac{2 \times 0 + (-1) \times 2ap}{2 + (-1)}, \frac{2(2a + ap^2) - 1 \times ap^2}{2 + (-1)} \right) \quad \checkmark$$

$$R \left(\frac{-2ap}{1}, \frac{4a + 2ap^2 - ap^2}{1} \right)$$

$$R(-2ap, 4a + ap^2)$$

iv) $X = -2ap \dots \textcircled{1} \quad Y = 4a + ap^2 \dots \textcircled{2}$

$$p = \frac{Y}{-2a} \dots \textcircled{3}$$

sub $\textcircled{3}$ into $\textcircled{2}$

$$Y = 4a + a \left(\frac{X}{-2a} \right)^2 \quad \checkmark$$

$$= 4a + \frac{aX^2}{4a^2}$$

$$= 4a + \frac{X^2}{4a}$$

$$4aY = 16a^2 + X^2$$

$$X^2 = 4aY - 16a^2$$

$$X^2 = 4a(Y - 4a) \quad \checkmark$$

the locus of R is a parabola with a vertex at $(0, 4a)$ \checkmark

(2mm(3))

Must state more than the fact that it is a parabola

v) (h, k) must satisfy $px + py = 2ap + ap^2$

$\therefore h + pk = 2ap + ap^2$ ✓

$ap^3 + 2ap + pk - h = 0$

$ap^3 + (2a - k)p - h = 0$

Comm (1) vi) Since this equation is a cubic the maximum number of solutions it can have is 3. ✓

\therefore the maximum number of normals which can pass through a point is 3.

Q4 i) $\sqrt{3}\cos\theta - \sin\theta = R\cos(\theta + \alpha)$
 $= R\cos\theta\cos\alpha - R\sin\theta\sin\alpha$

$\therefore R\cos\alpha = \sqrt{3} \dots \textcircled{1}$

$R\sin\alpha = 1 \dots \textcircled{2}$

$\textcircled{2} \div \textcircled{1} \quad \tan\alpha = \frac{1}{\sqrt{3}}$ ✓

$\alpha = \frac{\pi}{6}$

$R^2\cos^2\alpha + R^2\sin^2\alpha = 3 + 1$

$R^2 = 4$

$R = 2$ ✓

$\therefore \sqrt{3}\cos\theta - \sin\theta = 2\cos\left(\theta + \frac{\pi}{6}\right)$

- done well by most candidates

Comm (2)

ii) $\sqrt{3}\cos\theta - \sin\theta = 1$

$\therefore 2\cos\left(\theta + \frac{\pi}{6}\right) = 1$

$\cos\left(\theta + \frac{\pi}{6}\right) = \frac{1}{2}$

$\theta + \frac{\pi}{6} = 2n\pi \pm \frac{\pi}{3}$

$\therefore \theta = 2n\pi + \frac{\pi}{6}$ ✓

or $\theta = 2n\pi - \frac{\pi}{6}$ ✓

- done poorly
 students must learn general solution results

b) let r = the radius of the cone of water

\therefore by similar triangles

$$\frac{r}{h} = \frac{30}{60} \quad \checkmark$$
$$= \frac{1}{2}$$
$$r = \frac{h}{2}$$

Reas (2)

$$\therefore V = \frac{1}{3} \pi r^2 h \quad \checkmark$$
$$= \frac{1}{3} \pi \left(\frac{h}{2}\right)^2 \cdot h$$
$$= \frac{1}{3} \pi \frac{h^3}{4}$$
$$= \frac{\pi h^3}{12}$$

ii) $\frac{dv}{dt} = 36 \text{ cm}^3 \text{ s}^{-1}$

$$V = 36 \times 4$$
$$= 144 \text{ cm}^3 \quad \checkmark$$

Reas (2)

$$\therefore 144 = \frac{\pi h^3}{12}$$
$$1728 = \pi h^3$$
$$h^3 = \frac{1728}{\pi}$$
$$h = 8.19 \text{ cm} \quad \checkmark$$

iii) $\frac{dh}{dt} = \frac{dh}{dv} \times \frac{dv}{dt}$

$$= \frac{4}{\pi h^2} \times 36$$

$$= \frac{4}{\pi \times 8.19^2} \times 36$$

$$= 0.683 \text{ cm s}^{-1} \quad \checkmark$$

Calc (2)

iv) $S = \pi r^2$

$$\frac{ds}{dt} = \frac{ds}{dr} \times \frac{dr}{dt}$$

$$S = \pi \left(\frac{h}{2}\right)^2$$

$$= \frac{\pi h^2}{4}$$

$$\frac{ds}{dh} = \frac{\pi h}{2} \quad \checkmark$$

- many students didn't see the relationship between r and h .

- some students made this question harder than it needed to be. You don't need to integrate to find the volume.

- most students need to revise rates of change with two variables.

Calc (2)

$$\begin{aligned}\frac{dh}{dt} &= \frac{4}{\pi h^2} \times 36 \\ &= \frac{4}{\pi \times 32} \times 36 \\ &= 0.04476\dots\end{aligned}$$

$$\begin{aligned}\frac{dS}{dt} &= \frac{\pi h}{2} \times 0.04476\dots \\ &= \frac{\pi \times 32}{2} \times 0.04476\dots \\ &= 2.25 \text{ cm}^2 \text{ s}^{-1}\end{aligned}$$

Q5 a) i) $\angle EAB = \angle ACB$ (angle between tang. and chord at pt. of contact eq. angle in alt. segment) ✓

Reas (3)

$\angle ACB = \angle DBE$ (corr. angles in parallel lines are equal) ✓

$$\therefore \angle EAB = \angle DBE$$

LE is common

$\therefore \triangle ABE \parallel \triangle BDE$ (equiangular) ✓

ii) $\frac{AE}{BE} = \frac{BE}{DE}$ (corr. sides in similar triangles are in the same ratio) ✓

Reas (2)

$$BE^2 = AE \times DE.$$

$$b) \frac{d}{dt} \left(\frac{1}{2} v^2 \right) = -\frac{72}{x^2}$$

$$\begin{aligned}\frac{1}{2} v^2 &= \int -72x^{-2} dx \\ &= 72x^{-1} + C\end{aligned}$$

when $x=9$ $v=4$

$$\begin{aligned}\frac{1}{2} 4^2 &= \frac{72}{9} + C \\ 8 &= 8 + C\end{aligned}$$

$$\therefore C=0$$

Remember 'C'!! use conditions to find the value

Calc (3)

$$\frac{1}{2}v^2 = \frac{72}{x}$$

$$v^2 = \frac{144}{x}$$

$$v = \pm \frac{12}{\sqrt{x}} \quad \checkmark$$

the particle starts at $x=9$ and is travelling at 4 ms^{-1} to the right

Concl (1)

since $\frac{12}{\sqrt{x}} > 0$ for all x as x

\Rightarrow positive initially then v will remain positive for all x as the particle will not stop.

$$\therefore v = \frac{12}{\sqrt{x}}$$

must explain that the particle cannot stop

ii) $\frac{dx}{dt} = \frac{12}{\sqrt{x}}$

$$\frac{dt}{dx} = \frac{x^{1/2}}{12}$$

$$t = \int \frac{x^{1/2}}{12} dx$$

$$= \frac{x^{3/2}}{18} + C \quad \checkmark$$

Calc (2)

when $t=0$ $x=9$

$$0 = \frac{9^{3/2}}{18} + C$$

$$= \frac{3}{2} + C$$

$$C = -\frac{3}{2}$$

$$\therefore t = \frac{\sqrt{x^3}}{18} - \frac{3}{2} \quad \checkmark$$

remember C

iii) when $x=35$

$$t = \frac{\sqrt{35^3}}{18} - \frac{3}{2}$$

Calc (1)

$$= 10.0 \text{ (to 1 d.p.)}$$

\therefore it takes 10 seconds \checkmark

Q6 a) i) ${}^{29}P_{15}$ ✓
 Recs(3) ii) ${}^7D_6 \times {}^{21}P_9$ ✓
 iii) ${}^4P_4 \times {}^3P_3 \times {}^{21}P_8$ ✓

- every student must review this work!!!

b) i) horz vert
 $\ddot{x} = 0$ $\ddot{y} = -g$
 $\dot{x} = c_1$ $\dot{y} = -gt + k_1$
 $t=0 \quad \dot{x} = v \cos \alpha \therefore c_1 = v \cos \alpha$ $t=0 \quad \dot{y} = v \sin \alpha \therefore k_1 = v \sin \alpha$
 $\therefore \dot{x} = v \cos \alpha$ $\dot{y} = -gt + v \sin \alpha$
 Calc(2) $x = v \cos \alpha t + c_2$ ✓ $y = -\frac{gt^2}{2} + v \sin \alpha t + k_2$ ✓
 $t=0 \quad x=0 \therefore c_2=0$ $t=0 \quad y=0 \therefore k_2=0$
 $x = v \cos \alpha t \dots \textcircled{1}$ $\therefore y = -\frac{gt^2}{2} + v \sin \alpha t \dots \textcircled{2}$

- done very well. be careful not to leave steps out when rushing to answer questions

ii) from $\textcircled{1} \quad t = \frac{x}{v \cos \alpha}$
 sub into $\textcircled{2}$
 $y = -\frac{g}{2} \left(\frac{x}{v \cos \alpha} \right)^2 + v \sin \alpha \cdot \frac{x}{v \cos \alpha}$ ✓

- done very well

Calc(2)
 $= -\frac{g}{2} \frac{x^2}{v^2 \cos^2 \alpha} + x \tan \alpha$
 $= -\frac{gx^2}{2v^2} \sec^2 \alpha + x \tan \alpha$ ✓

$\therefore y = x \tan \alpha - \frac{gx^2}{2v^2} (1 + \tan^2 \alpha)$

iii) find y when $\alpha = 60^\circ \quad v = 10 \quad x = 5$

- many students didn't use ii) for this question - that's fine - just took a little longer

Calc(2)
 $y = 5 \tan 60^\circ - \frac{9.8 \times 5^2}{2 \times 10^2} (1 + \tan^2 60^\circ)$ ✓
 $= 3.76 \text{ m (to 2 d.p.)}$

\therefore it clears the shrub by approx 76cm. ✓

ii) find t when $y=0$

$$0 = -\frac{1}{2} \times 9.8 \times t^2 + 10 \sin 60^\circ t$$
$$= t(-4.9t + 5\sqrt{3})$$

$$\therefore t=0 \quad t = \frac{5\sqrt{3}}{4.9}$$

Calc (3)

↑
initial

$$\therefore t = 1.767 \text{ (to 4 sig figs)}$$

$$x = 10 \cos 60^\circ \times 1.767$$
$$= 8.84 \text{ m (to 2 d.p.)}$$

- done fairly well

Q7 a) i) find x when:

$$\frac{1}{3} = \frac{400}{x^2 + 900}$$

$$x^2 + 900 = 1200$$

$$x^2 = 300$$

$$x = \pm 10\sqrt{3}$$

since B is located above the positive x -axis

$$x = 10\sqrt{3}$$

ii) Area of shaded region =

Area under curve - area of rectangle

$$\text{Area under curve} = 2 \int_0^{10\sqrt{3}} \frac{400 \, dx}{x^2 + 900} \text{ (even fn.)}$$

$$= 800 \int_0^{10\sqrt{3}} \frac{dx}{x^2 + 900}$$

$$= \left[\frac{800}{30} \tan^{-1} \frac{x}{30} \right]_0^{10\sqrt{3}}$$

$$= \frac{80}{3} \left(\tan^{-1} \frac{10\sqrt{3}}{30} - \tan^{-1} 0 \right)$$

$$= \frac{80}{3} \left(\frac{\pi}{6} - 0 \right)$$

$$= \frac{40\pi}{9}$$

Remember the rectangle
as well

$$\text{Area of rectangle} = 20\sqrt{3} \times \frac{1}{3}$$

$$= \frac{20\sqrt{3}}{3}$$

$$\text{(Calc(2)) } \therefore \text{Area} = \frac{40\pi}{9} - \frac{20\sqrt{3}}{3}$$

$$= \frac{20(2\pi - 3\sqrt{3})}{9} \text{ m}^2$$

$$\text{iii) Area} = 2 \int_0^k \frac{400}{x^2 + 900} - 2k \times \frac{400}{k^2 + 900}$$

$$= \frac{80}{3} \left[\tan^{-1} \frac{x}{30} \right]_0^k - \frac{800k}{k^2 + 900}$$

$$= \frac{80}{3} \tan^{-1} \frac{k}{30} - \frac{800k}{k^2 + 900}$$

Next discuss the limit of the rectangle areas.

$$\text{(Conn(2)) as } k \rightarrow \infty \quad \tan^{-1} \frac{k}{30} \rightarrow \frac{\pi}{2} \quad \& \quad \frac{800k}{k^2 + 900} \rightarrow 0$$

$$\therefore \text{limiting area} = \frac{80}{3} \times \frac{\pi}{2} = \frac{40\pi}{3} \text{ m}^2$$

$$\text{b) i) } \sin x + \cos x = R \sin(x + \alpha)$$

$$= R \sin x \cos \alpha + R \cos x \sin \alpha$$

$$\therefore R \sin \alpha = 1 \dots \textcircled{1}$$

$$R \cos \alpha = 1 \dots \textcircled{2}$$

$$\textcircled{1} \div \textcircled{2} \quad \tan \alpha = 1$$

$$\alpha = \frac{\pi}{4}$$

$$R^2 \sin^2 \alpha + R^2 \cos^2 \alpha = 1^2 + 1^2$$

$$R^2 = 2$$

$$R = \sqrt{2}$$

$$\therefore \sin x + \cos x = \sqrt{2} \sin\left(x + \frac{\pi}{4}\right)$$

$$\text{ii) } \frac{d}{dx} (e^x \sin x) = e^x \cos x + e^x \sin x$$

$$= e^x (\sin x + \cos x)$$

$$= e^x \cdot \sqrt{2} \sin\left(x + \frac{\pi}{4}\right)$$

$$= \sqrt{2} e^x \sin\left(x + \frac{\pi}{4}\right)$$

iii) Step 1: Show the result is true for $n=1$

$$\text{i.e. } \frac{dy}{dn} = (\sqrt{2})^1 e^n \sin\left(n + \frac{1\pi}{4}\right)$$

$$y = e^n \sin n \\ = \sqrt{2} e^n \sin\left(n + \frac{\pi}{4}\right) \text{ from ii)}$$

\therefore result is true for $n=1$

Step 2: Assume the result is true for $n=k$

Recy (3).

$$\text{i.e. } \frac{d^k y}{dn^k} = (\sqrt{2})^k e^n \sin\left(n + \frac{k\pi}{4}\right)$$

Step 3: Show the result is true for $n=k+1$

$$\text{i.e. } \frac{d^{k+1} y}{dn^{k+1}} = (\sqrt{2})^{k+1} e^n \sin\left(n + \frac{(k+1)\pi}{4}\right)$$

$$\text{LHS} = \frac{d^{k+1} y}{dn^{k+1}} = \frac{d}{dn} \left(\frac{d^k y}{dn^k} \right)$$

$$= \frac{d}{dn} \left((\sqrt{2})^k e^n \sin\left(n + \frac{k\pi}{4}\right) \right) \checkmark$$

$$= (\sqrt{2})^k \left[e^n \sin\left(n + \frac{k\pi}{4}\right) + e^n \cos\left(n + \frac{k\pi}{4}\right) \right] \checkmark$$

$$= (\sqrt{2})^k \left[e^n (\sqrt{2}) \sin\left(n + \frac{k\pi}{4} + \frac{\pi}{4}\right) \right]$$

$$\text{from i)} \\ = (\sqrt{2})^{k+1} e^n \sin\left(n + \frac{(k+1)\pi}{4}\right) \checkmark$$

= RHS

\therefore result is true for $n=k+1$

\therefore By the principle of mathematical induction the result is true for all positive integers n .